

# EASTSIDE HERITAGE CENTER



*Connections for yesterday, today, and tomorrow.*

## HERITAGE REFLECTOR

October 2009

Volume X

Issue III

### Vision

To be a destination heritage museum and research facility that enhances community identity through the preservation and stewardship of the Eastside's history.

### Mission

To steward Eastside history by actively collecting, preserving, and interpreting documents and artifacts, and by promoting public involvement in and appreciation of this heritage through educational programming and community outreach.

## In this Issue

Education Corner.....	2
Thank You.....	2
Schoolhouse cont.....	3
Recent Accessions.....	3
Wish List.....	3
President's Message.....	4
Programs.....	5
Strawberry Festival .....	6
In Memoriam.....	6
Planned Giving .....	6
Volunteer Corner.....	7
EHC Membership .....	7

## Back to School...

Conn Williamson  
*Volunteer*

The fading reverberation of Boeing and the boom of Microsoft resound in the faces, cars and buildings of downtown Bellevue. Frenetic, vibrant and diverse, the pace of life and density of activity cannot properly justify traditions first set into motion in the latter half of the 19th century. With the onset of fiber optics and information technology, the generations raised under the ramifications of cell phones and email display a natural detachment to the environment faced by

Bellevue's early generations of students attending the Main Street schoolhouse. "We couldn't really keep up with current events globally in the classroom because we didn't possess the technology," said Marillyn Carlton, who attended the first schoolhouse.

Pat Sandbo taught at the schoolhouse in the early 1940s.

"We would get our international news at the movies," Pat said. "It was fairly simple with the desks, chalkboards, and textbooks. We did have a globe."



Above: Students outside Main Street School, circa 1900. OR/L 79.79.89

The expansive wooden structure was almost daunting to young students. "The ceilings were quite high. My brother was able to build a full sized teepee in the classroom for a Thanksgiving project," Carlton iterated.



Above: Hand bell from the old Main Street School.

However, she remembers the one story building to be comfortable even in the most extreme weather conditions. "In the basement there was a boiler to heat the rooms."

Today, a Chevron service station dominates the site where children once learned and played.

"There was an enclosed area in the back of the property with a swing set and some teeter-totters," she recalled. "We didn't have all the fancy

*continued on page 3...*

# Education Corner

## Change Over Time

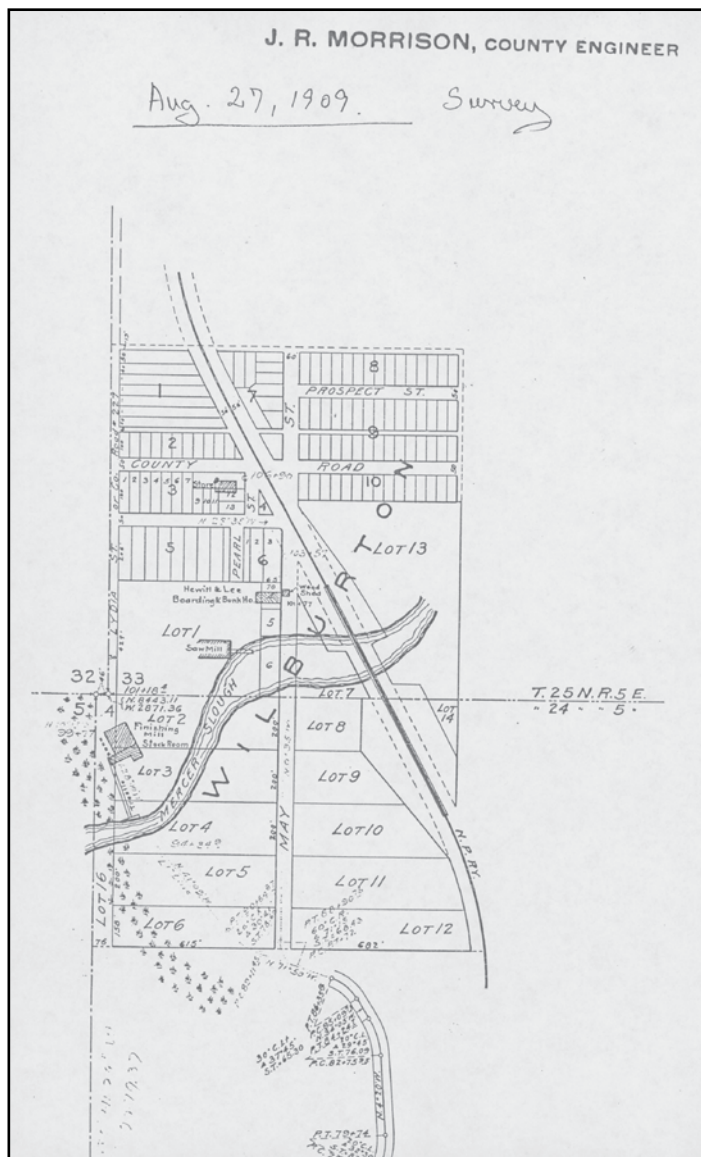
### Curriculum Project

Jane Morton  
Education Coordinator

This spring, the Eastside Heritage Center received a \$5,482 education grant from 4Culture for development of the *Change Over Time: The Lowering of Lake Washington* curriculum project. Eastside Heritage Center and the Bellevue Public Schools have partnered to develop twelve kits to be used in the 7th grade social studies classes beginning the spring of 2010.

Students will be exploring the impact of the 1916 opening of the Chittenden Locks in Seattle, which changed the shoreline all around Lake Washington and had a direct economic impact on the Eastside. Each kit will include written lesson plans to accompany primary sources, photos, maps, newspaper articles from 1900 to 1925, research sources and an introductory PowerPoint presentation.

EHC Archivist, Megan Carlisle, has been working to identify the various materials needed for the kit. Both Megan and Jane Morton, project manager for the grant, are also working with the BSD's social studies curriculum specialists and a lead teacher.



Above: Example of a primary source document that will be included in the curriculum kits. This is a map of the Wilburton Mill from 1909, showing Mercer Slough before the lowering of Lake Washington.

## Thank You

Eastside Heritage Center would like to thank the Fred Meyer Fund for its community grant of \$3,500 to support EHC's Fraser Cabin Heritage Days programming. The grant will enable EHC to continue to offer these popular programs for local families.

EHC would also like to express its appreciation to 4Culture for its 2009 Arts Special Projects grant of \$4,000 to support this year's Strawberry Festival. In addition, EHC was awarded Heritage Special Projects funding in the amount of \$1,780 to develop *Lake Excursions: 25 Cents*, an exhibit currently on display at the Winters House featuring artifacts, historic photos of 10 different steamboats, and memorabilia of the 1909 Alaska-Yukon-Pacific-Exposition.

Thank you to the City of Bellevue for its Arts Special Projects grant of \$3,000, which enabled EHC to expand its cultural offerings at the 2009 Strawberry Festival. In particular, through the presentation of Duwamish Tribal Artists and Japanese Taiko.

Finally, EHC is extremely grateful to Bellevue Parks & Community Services for its longstanding support and partnership to ensure the history of our community is preserved for future generations and shared with those of today.

*Schoolhouse...continued from page 1*

gadgets, but I remember running around and having fun.”

In 1892, Bellevue’s two-room schoolhouse with a bell tower was completed costing \$1,500. In the familiar black and white photograph depicting the homestead era of downtown with an eerie clairvoyance, the building dominates the landscape and gleams with an almost divine notion.

In 1920, enrollment in Bellevue had reached 150, far exceeding the capacity of the original schoolhouse. A new two-story brick building was constructed in the summer and ready for the opening of the school year.

During the 1930s and 1940s, the Main Street schoolhouse was used to accommodate an overflow of students from the two story grade school, located off of 102nd Avenue and 4th Street.

Carlton recalls the glaring lack of a proper cafeteria at the original schoolhouse.

“We would bring our lunches from home,” said Carlton who completed kindergarten and first grade at the schoolhouse in the wake of the Great Depression. “The cloakroom possessed a smell of wet wool and a hint of sandwiches.”

The small community promoted solid academic performance and good habits.

“You simply knew everyone,” she said. “There were 37 of us in the first grade. It wasn’t an easy task for our teacher, but we were pretty well behaved.”

Sandbo remember the gravity of a faculty member receiving a phone call. “If the phone did

ring during class, everyone would be in stitches.”

According to Carlton, the topography of the downtown corridor made for an interesting commute.

“I would walk five blocks to school along Lake Washington Boulevard and I could see the ferry coming from around the point and into Meydenbauer Bay,” she said. “During a heavy snow things would be a bit more difficult.”

The schoolhouse survived the magnitude of growth and transition of the business district until ultimately succumbing to the wrecking ball in 1965, when the property was sold. The Eastside Heritage Center possesses photographs of the schoolhouse and its students, as well as personal stories and other reference materials, which are available for research.

To learn more, contact EHC Archivist Megan Carlisle at 425-450-1049 or email [archives@eastsideheritagecenter.org](mailto:archives@eastsideheritagecenter.org).

## Recent Accessions

Thank you for your donations to the collection:

### Margot Blacker

- Photographs of modern downtown Bellevue

### Ross McIvor

- Ad for Bellevue Gun Shop (early business)

### Richard Malm

- Two books on historic whaling

### Margaret Zobrist

- 2 photographs of the Bellevue Fire Department

### Rhoda Sydnor Collins

- Photographs of Bellevue Grade School students

### Steve Williams

- Newcastle Coal Car Wheel

### Lillian Garland

- Clothing and toys

## EHC Wish list

EHC is seeking the following donations:

### FOR THE OFFICE:

- Digital Projector for education & outreach programming
- Letter-size filing cabinets

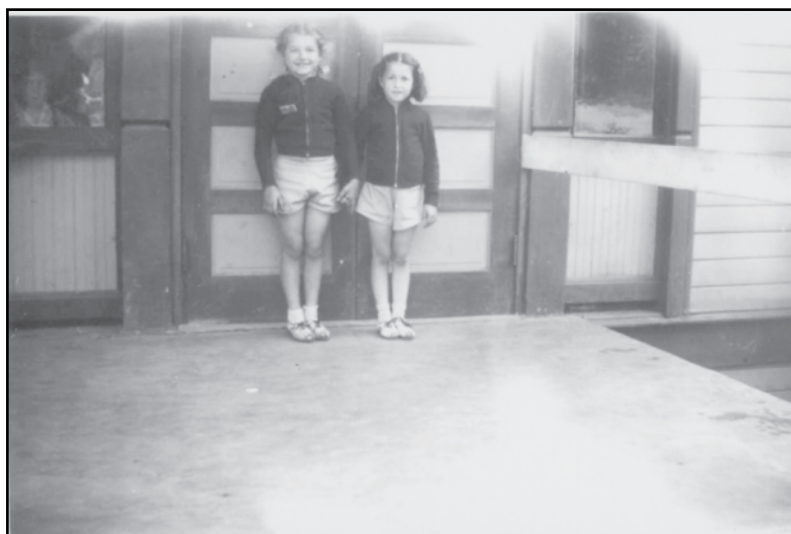
### FOR THE COLLECTION:

- Eastside women’s history items.
- Photos, documents and ephemera from:
  - › South Bellevue area (in particular Cougar Mountain, Lakemont, Lewis Creek Park & Coal Creek)
  - › Named neighborhoods, e.g. Somerset, Newport Hills, Whispering Heights, Stewart Heights.
  - Photos of Dick’s Drive-In Restaurant in Bellevue

### To Donate Items:

call 425-450-1049 or email [archives@eastsideheritagecenter.org](mailto:archives@eastsideheritagecenter.org)

## Recent Accession:



*Left:* Rhoda Sydnor and Barbara Carr at the front door of Bellevue’s Main Street School in 1942, the last year the building was used as a school.

Donated by Rhoda Sydnor Collins, 2009.024.008

## Eastside Heritage Center

### Board of Trustees

Ross McIvor <i>President</i>	Michael Luis <i>Treasurer</i>	Betina Finley Sherry Grindeland Ray Higgins Karen Klett L. Lee Maxwell Kim Radcliffe Sue Sander Anne Taylor
Iris Tocher <i>Vice President</i>	Lynn Sherk <i>Secretary</i>	
Tim Johnson <i>Vice President</i>	Margot Blacker Justin Bunch Rick Carlson Reagan Dunn	
Stu Vander Hoek <i>Past President</i>		

### Staff

Heather Trescases <i>Executive Director</i>	Megan Carlisle <i>Archivist</i>	Jane Morton <i>Education Coordinator</i>
--	------------------------------------	---

### Endorsers

Bob Burke	Pamela Lee	Daphne Schneider
Nan Campbell	Ken Johnson	David Schooler
Dick Chapin	Leslie Lloyd	Karl Thunemann
Doris Cooper	Doreen Marchione	John Valaas
Mike Creighton	Dan McDonald	Janice & DP Van Blaricom
Jean Floten	Louise Miller	Bob Wallace
Kemper Freeman, Jr.	Rose Nohara	Scott Wallace
Stacey Graven	Bob Nuber	Rosalie Whyel
Jerry Henry	Ron Sher	
Ross Hunter	Lee Springgate	
Carol James	Bill Ptacek	
Fred Jarrett	Colin Radford	

### Charter/Founding Members

Brad Best	Louise Miller
John Betrozoff	Alex Modelski
C.Keith Birkenfeld	Charles Morgan
Richard & Margot Blacker	Bob Neir
Charles Bovee	Phil & Shelley Noble
Dianna Broadie	C. & W. O' Donell
John Cannon	Arnold Olson
Karyl Dean	Sally Polk
Steve & Kathy Dennis	Connie Reed
Phyllis Fenwick	Betty Ann Rizk
Diana Ford	Bob & Pat Sandbo
Peter Gulick	Victor Scheffer
Birgit Hansen	Daphne Schneider
Peggy Hansen	Dick & Susan Schwasnick
Bob Hennig	Barbara Sharpe
Thomas K. Hitzroth	W. & V. Thompson
Bill Lagen	Karl Thunemann
Charles Le Warne	Iris Tocher
Anne Long	D.P. & J. Van Blaricom
Jim & Pat Loughran	Stuart Vander Hoek
Karen & Duke Luetjen	Libby Walgamott
Louis & Patty Marsh	John Walker
Beatrice Mateson	Doug & Patti Ward
Philip Maxeiner	James & Gwen Warren
Lee Maxwell	Robert & Barbara Welsh
John McClelland	Rosalie Whyel
Rosa McDonald	Marcy Williams

# President's Message



Ross McIvor  
*President*

I have not written a column for our newsletter for a while, now. During that time, Eastside Heritage Center's dedicated staff, board and volunteers have created and managed many successful programs. We have struggled however, as have many charitable organizations, to obtain sponsorship dollars and donations during these economic times.

Notwithstanding this challenge, we have still managed to pull off the programs and events we set out to do at the beginning of the year. This is due entirely to the passion our board, staff and volunteers have for this organization. I thank them all for their commitment and thank you all for the monetary contributions you have been able to give. We are very grateful to all of our supporters.

Success leads to another level of challenges. We have done such a great job pulling off our programs with limited resources – in particular the Strawberry Festival, which had a \$20,000 sponsorship shortage – that we “appear” to be doing just fine financially. However, we are facing substantially less funding than in prior years and

as a result, we have had to make some necessary changes to our staffing and operations, in order to maintain the organization's sustainability into the future. As such, these past few months we have had to say farewell to three extremely dedicated and valued part-time staff members: Savita Krishnamoorthy, Elizabeth Heinz, and Carly Jo Jellyman. In addition, our Executive Director's time has been reduced to 4-days a week. We are hopeful that as conditions improve, we will be in a position to strengthen our staffing capacity once again. In the meantime, it will be necessary to make an even greater effort to prioritize activities to guarantee the best use of current staff and dedicated volunteers.

What does this mean for you? The Mission of the organization will not be compromised in any way by these changes; it will serve as our guide to ensure a streamlined and efficient operation. The key for us is communication. We want to hear your thoughts and requests for things you would like to see. We hope you will engage your friends and connections in conversations about history and heritage, as it will help us find others who are passionate about our work. All of this will translate into more members, more volunteers for our programs and committees, and will help meet our ongoing need for Board members to move us to our future. We look forward to finding innovative ways to reach out to the community and your suggestions are welcomed.

# Upcoming Programs

## HERITAGE SERIES

### **Science, History & Culture - Cattails of Mercer Slough**

**Date & Time:** Saturday, November 7, 2009  
 10:00-11:30 AM  
 Heritage Program & Kids workshop  
 11:30 AM-1:00 PM  
 Park Ranger walks & Mat weaving demos

**Location:** Mercer Slough Enviro. Education Center  
 (1625 118th Ave SE, Bellevue)

This community event brings the science, history and culture of Cattails to life for the whole family. Adults can enjoy a lecture by Duwamish Tribal Services that will look at the historic significance and uses of Cattails for Native Americans, while kids get up close and personal with Cattails using video microscopes. Later, the whole family can choose to join a Park Ranger to learn about Cattail habitat and historic trading routes, or learn how to weave Cattail mats with Duwamish artists.

This event is a collaboration between the City of Bellevue, Duwamish Tribal Services, Eastside Heritage Center and Pacific Science Center.



*Above:* Duwamish Tribe Master Weaver, Mary Lou Slaughter, presents her work at the 2009 Strawberry Festival. Mrs. Slaughter will be demonstrating basket and mat weaving as part of the Cattails of Mercer Slough Heritage Series event on November 7.

FOR MORE INFORMATION  
 on any Eastside Heritage Center programs,  
 visit [www.eastsideheritagecenter.org](http://www.eastsideheritagecenter.org)

### Program Ideas?

Contact EHC at 425-450-1049 or  
 email [director@eastsideheritagecenter.org](mailto:director@eastsideheritagecenter.org)

## MAGIC SEASONS REMEMBERED

**Date & Time:** Saturday, December 5, 2009  
 10:00 AM - 2:00 PM

**Location:** Winters House  
 (2102 Bellevue Way SE., Bellevue)

Discover family holiday traditions of Bellevue's past. The Eastside Heritage Center invites you to a Magic Season open house at the historic Winters House. Enjoy Santa exhibits, guided tours and music by the Cascadian Chorale.

Presented in partnership with Bellevue Parks & Community Services.



*Pictured Above:* Dairy Queen at NE 8th & 112th Ave NE in Bellevue, which first opened its doors in 1961. Photo courtesy Tochterman Family.

Eastside Heritage Center  
 3rd Annual Benefit Dinner

Thursday, February 4, 2010

6:00 PM

Reception & Hors d'oeuvres

7:00 - 8:30 PM

Dinner & Program

Meydenbauer Center  
 11100 NE 6th Street, Bellevue

## Planned Giving

Be a part of Eastside history...  
Leave a legacy and make a planned gift to  
the Eastside Heritage Center.

You can ensure that the history of the Eastside is preserved for future generations by including a bequest to the Eastside Heritage Center in your will. The wording of your bequest can be as simple as:

"I bequeath to the Eastside Heritage Center a gift of \$ \_\_\_\_\_ or \_\_\_\_\_ % of my estate."

Please remember to include our federal tax identification number, which is 91-1124636. A bequest can also take the form of stocks, bonds, mutual funds, annuities, or real estate.

A planned gift requires careful consideration and is best made with the guidance of your own financial or legal advisors.

If you have included the Eastside Heritage Center in your will, or would like information on making a planned gift, please contact the EHC's Executive Director at 425-450-1049 or [director@eastsideheritagecenter.org](mailto:director@eastsideheritagecenter.org).

## Strawberry Festival Most Successful Ever!

The 2009 Strawberry Festival drew a record attendance of over 40,000 people to Crossroads Park this past June. A warm thank you to all of the sponsors and volunteers who helped to make the event such a success!

As Eastside Heritage Center's Signature Event, the Strawberry Festival provides an opportunity to create public awareness for the organization and to promote community involvement in and appreciation of Bellevue and Eastside history.

In conjunction with the Strawberry Festival each year, Eastside Heritage Center hosts a Haiku Contest for elementary school students around the

Eastside, to celebrate the region's Japanese-American heritage.

A Haiku is a classical Japanese poetry form. The standard Haiku format is a triplet of lines containing five, seven, and five syllables per respective line. The 2009 Haiku Contest theme was "strawberries". Over 100 entries were received this year and each one was evaluated on originality, creativity, clarity of expression, good spelling, grammar and syntax. Following are the winning poems.

Congratulations to all!

## In Memoriam

### PAUL BRALLIER

The Eastside Heritage Center is very sad to report the passing of Paul Brallier, one of our very faithful Winters House hosts. He and his wife, Catherine, have been volunteering the second Saturday of the month for many years and Paul will be greatly missed. Paul loved children and his child-friendly yard was a magnet for the many children in west Bellevue.

"The Bralliers are some of the most generous people I've

ever met," said Betina Finley, EHC board member. "I grew up next to Paul and his wife Catherine. They would invite my sister and me in for hot chocolate many days when my mom was working late and we were home alone from school. Paul also taught me how to garden and made sure the little patch in our yard always grew successfully." What a wonderful legacy for all of EHC!

*Here in the Springtime  
They all pop up to greet us  
Sun shines on them all.*

By Valerie  
Age 10

*A delicious fruit  
Sweet, sour, and triangle shaped  
Hard working farmers.*

By Jierui

*Like a bright flower  
Sweetness bursting in the mouth  
Exploding sunshine.*

By Bonnie  
Age 9

*Washington produce  
A delicious valentine  
Seeds all over it.*

By Annabelle  
Age 9

# Volunteer Corner

“Snowflakes are one of nature’s most fragile things, but just look what they can do when they stick together.” - Vesta M. Kelly

**Karen Klett**  
*Volunteer Coordinator*

Winters House hosts are absolutely critical to our commitment to the City of Bellevue for use of this historic house as our public home, archives and research center.

that the house is open to the public. Without them, it would be impossible to fulfill our obligation. We have an outstanding complement of dedicated hosts, many of whom have been participating for 10 to 15 years! However, we now

need four to five new hosts, especially on Saturdays. Members of the EHC Board have been hosting on the third Saturday of the month and it has been an excellent experience.



Above: Winters House living room.

Our presence is even more critical now that the house is primarily Eastside Heritage Center’s responsibility and there is no longer a Park Ranger on site. The host’s volunteer commitment of four hours a month means

If you or your friends would like to take advantage of this great opportunity to serve the EHC and to learn about Bellevue’s history, contact Karen Klett at (425) 450-1049 or karenklett@eastsideheritagecenter.org.

## Eastside Heritage Center MEMBERSHIP APPLICATION

**MEMBERSHIP LEVEL:**

- |                                       |        |                                      |       |
|---------------------------------------|--------|--------------------------------------|-------|
| <input type="checkbox"/> Benefactor   | \$1000 | <input type="checkbox"/> Contributor | \$100 |
| <input type="checkbox"/> Steward      | \$500  | <input type="checkbox"/> Family      | \$40  |
| <input type="checkbox"/> Supporter    | \$250  | <input type="checkbox"/> Individual  | \$25  |
| <input type="checkbox"/> Organization | \$100  | <input type="checkbox"/> Student     | \$15  |

Enroll me as:  New Member  Membership Renewal  Gift

MEMBER'S NAME \_\_\_\_\_

ADDRESS \_\_\_\_\_

CITY/STATE/ZIP CODE \_\_\_\_\_

PHONE \_\_\_\_\_

EMAIL \_\_\_\_\_

This membership is a gift from: \_\_\_\_\_

**PAYMENT INFORMATION:**

- Check (make checks payable to the Eastside Heritage Center)  
 Credit Card  
 Visa  Master Card  American Express

NAME ON CARD \_\_\_\_\_

CARD # \_\_\_\_\_

EXP. DATE \_\_\_\_\_ V-CODE (last 3 digits on back of Visa/MC)

Additional Contribution: \_\_\_\_\_ **Total Enclosed:** \_\_\_\_\_

My company will MATCH my gift

Company Name: \_\_\_\_\_

*The Eastside Heritage Center is a 501 (c)(3) charitable organization.*

**PLEASE MAIL THIS FORM AND PAYMENT TO:**

Eastside Heritage Center  
 P.O. Box 40535 Phone: 425-450-1049  
 Bellevue, WA 98015 Fax: 425-450-1050  
[www.EastsideHeritageCenter.org](http://www.EastsideHeritageCenter.org)

**All Eastside Heritage Center Members receive:**

- Membership Card
- Quarterly Newsletter with historical features and program updates
- Invitations to exhibits and programs
- 10% discount on books and gift shop items

**CATEGORIES:**

**Benefactor - \$1,000**

Receives Steward Benefits, plus:  
 Honored at Annual Event

**Steward - \$500**

Receives Supporter benefits, plus:  
 Special publication  
 Curator’s Tour of the collection

**Supporter - \$250**

Receives Organization benefits, plus:  
 Historic photo reproduction

**Organization (schools, scout troops, etc) - \$100**

Receives Contributor benefits, plus:  
 Free Treasure Box rentals  
 Discounts on filed trips and classroom presentations

**Contributor - \$100**

Additional benefits include:  
 Access to Archives fee waived

**Family - \$40**

**Individual - \$25**

**Student (under 18 years of age) - \$15**

EASTSIDE HERITAGE CENTER CONTACT INFORMATION

Mailing Address: P.O. Box 40535, Bellevue, WA 98015  
Tel: 425-450-1049  
Fax: 425-450-1050  
E-Mail: director@eastsideheritagecenter.org  
Website: www.eastsideheritagecenter.org

McDOWELL HOUSE (EHC Administrative Offices)  
Visiting Address: 11660 Main Street, Bellevue, WA 98005  
Tel: 425-450-1049

WINTERS HOUSE (National Historic Site and EHC Research Services)  
Visiting Address: 2102 Bellevue Way SE, Bellevue, WA 98004  
Tel: 425-450-1046 (EHC Research inquiries)  
425-452-2752 (City of Bellevue, Winters House)

Hours of Operation: EHC Research Office Hours  
Tues., 10:00 AM - 4:00 PM

Winters House Public Visiting Hours:  
Tues 10:00 AM-4:00 PM ; Thurs-Sat 10:00 AM-2:00 PM ; Closed Mon, Wed & Sun.

ACTIVITIES OF THE EASTSIDE HERITAGE CENTER ARE SUPPORTED BY



HERITAGE REFLECTOR - Editor in Chief: Lynn Sherk with Graphic Design / Layout: Heather Trescases  
HERITAGE REFLECTOR © 2009 Eastside Heritage Center. All rights reserved.

NON PROFIT ORG  
US POSTAGE  
PAID  
BELLEVUE WA 98005  
PERMIT NO. 66

